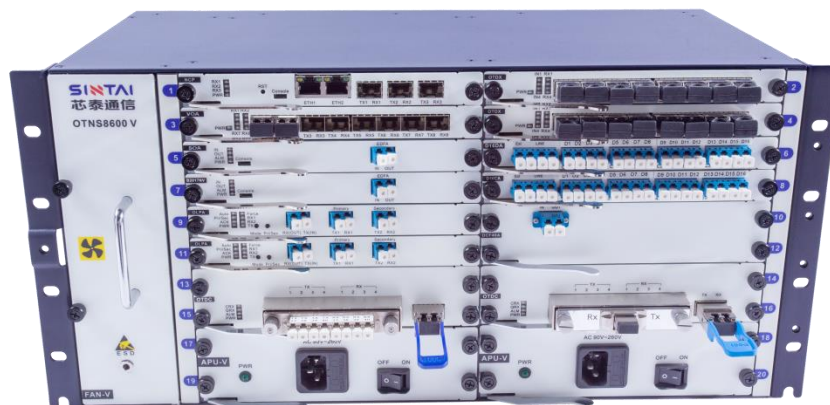


## OTNS8600 V (5U WDM System)

The OTNS8600 series wavelength division transmission system launched by Sintai Communication includes OTNS8600 V, OTNS8600 II and OTNS8600 I. This series of products are positioned in metropolitan area network, which integrate the characteristics of WDM and OTN, apply advanced transmission technology and high integration technology, and provide broadband, large capacity, transparent transmission function. They can realize smooth upgrade of capacity, and provide comprehensive, flexible and mature protection scheme, providing a stable platform for unified multi service carrying and future network upgrading and expansion.

OTNS8600 WDM transmission system can provide various types of cards, including: optical transponder unit (OTU / OEO), optical amplification unit (EDFA / RFA), optical protection unit (OLP), optical fiber monitoring unit (OLM), dispersion compensation unit (DCF / TDC), and WDM unit (MUX / DEMUX). Different service cards support hot-plugging and can be used in all series of chassis. It has the characteristics of high compact structure, flexible configuration, low power consumption, and supports the humanized network management interface of B/S architecture, which is easy to maintain. It is widely used in operators, radio and television, IDC, finance, government, cloud network, big data and other industries.



OTNS8600 V 5U WDM Transmission System

### Product Feature

- Standard 5U rack-mount design, provides 15 pluggable service card slots, 1 network management card slot (can be also used as 1 service card slot), 1 fan card slot and 2 power card slots
- It supports WDM application of all types of services with the rate of 100Mbit/S ~ 100Gbit/s, and meets the requirements of multi-service access
- It supports both CWDM and DWDM
- It supports single fiber unidirectional, single fiber bidirectional and dual fiber bidirectional application scenarios
- It supports the unified network management platform and provides perfect network and equipment performance monitoring capabilities
- It supports AC 220V AC, - 48V DC power supply with 1+1 power input protection



- It supports installation of free configuration and it is the plug-and-play type
- It adopts the green energy-saving design with power consumption of 450W in typical configuration

## Product specification

Item	Description
Product model	OTNS8600 V
Equipment size	5U: 220 mm (height)×442 mm (width)×220 mm (depth)
Service slot	16 slots (the network management card is optional for one of the slots)
Installation	19 "standard cabinet installation
Working temperature range	-10℃～60℃ (typical)
Working humidity range	5~95% without condensation
Storage temperature range	-40℃～85℃
Heat dissipation	1 fan card which supports hot-plugging
Power supply	2 power cards, support AC 220 V or DC - 48 V power supply, single board optional, 1 + 1 hot backup
Power consumption	450W (Maximum power consumption of full configuration)

